

检测报告 Test Report

报告编号 RLSZE001218880001
Report No. RLSZE001218880001

第 1 页 共 6 页
Page 1 of 6

申请单位 惠州市好时佳科技有限公司
Applicant HUIZHOU HOUSEFAR TECHNOGY CO., LTD
地 址 惠州市惠阳区秋长镇 高布工业区
Address GAOBU DISTRICT, QIUBAO RD, QIUCHANG TOWN, HUIYANG, HUIZHOU CITY, GUANGDONG, CHINA

样品信息 Report on the submitted sample(s) said to be

样品名称 PVC原料
Sample Name PVC原料
样品描述 半透明塑料颗粒
Sample Description Semi-transparent plastic grains
样品颜色 透明蓝
Color 透明蓝
材料名称 PVC
Material PVC
样品接收日期 2012.03.23
Sample Received Date Mar. 23, 2012
样品检测日期 2012.03.23-2012.03.27
Testing Period Mar. 23, 2012 to Mar. 27, 2012

检测要求 根据客户要求, 对所提交样品中的铅(Pb), 镉(Cd), 汞(Hg), 六价铬(Cr(VI)), 多溴联苯(PBBs), 多溴二苯醚(PBDEs)进行测试。
Test Requested As specified by client, to test Lead(Pb), Cadmium(Cd), Mercury(Hg), Hexavalent Chromium(Cr(VI)), Polybrominated Biphenyls(PBBs), Polybrominated Diphenyl Ethers(PBDEs) in the submitted sample(s).

检测依据/检测结果: 请参见下页。
Test Method/Test Result(s): Please refer to the following page(s).

主 检:
Tested by

Rick

签 发:
Approved by

Danli

技术经理
Technical Manager



审 核:
Inspected by

Vargas

签发日期:
Date

2012.03.27
Mar. 27, 2012

No. 38473869

检测报告 Test Report

报告编号 RLSZE001218880001
Report No. RLSZE001218880001

第 2 页 共 6 页
Page 2 of 6

检测依据 Test Method

测试项目 Test Item(s)	测试方法 Test Method	测试仪器 Measured	方法检测限 MDL
铅(Pb) Lead(Pb)	IEC 62321:2008 Ed.1 Sec.8	ICP-OES	2 mg/kg
镉(Cd) Cadmium(Cd)	IEC 62321:2008 Ed.1 Sec.8	ICP-OES	2 mg/kg
汞(Hg) Mercury(Hg)	IEC 62321:2008 Ed.1 Sec.7	ICP-OES	2 mg/kg
六价铬(Cr(VI)) Hexavalent Chromium(Cr(VI))	IEC 62321:2008 Ed.1 Annex C	UV-Vis	2 mg/kg
多溴联苯(PBBs) Polybrominated Biphenyls(PBBs)	IEC 62321:2008 Ed.1 Annex A	GC-MS	5 mg/kg
多溴二苯醚(PBDEs) Polybrominated Diphenyl Ethers(PBDEs)	IEC 62321:2008 Ed.1 Annex A	GC-MS	5 mg/kg

检测结果 Test Result(s)

测试项目 Test Item(s)	含量Content
铅(Pb) Lead(Pb)	N.D.
镉(Cd) Cadmium (Cd)	N.D.
汞(Hg) Mercury(Hg)	N.D.
六价铬(Cr(VI)) Hexavalent Chromium(Cr(VI))	N.D.

测试项目 Test Item(s)	含量Content
多溴联苯(PBBs) Polybrominated Biphenyls(PBBs)	
一溴联苯 Monobromobiphenyl	N.D.
二溴联苯 Dibromobiphenyl	N.D.
三溴联苯 Tribromobiphenyl	N.D.
四溴联苯 Tetrabromobiphenyl	N.D.
五溴联苯 Pentabromobiphenyl	N.D.
六溴联苯 Hexabromobiphenyl	N.D.
七溴联苯 Heptabromobiphenyl	N.D.
八溴联苯 Octabromobiphenyl	N.D.
九溴联苯 Nonabromobiphenyl	N.D.
十溴联苯 Decabromobiphenyl	N.D.

检测报告 Test Report

报告编号 RLSZE001218880001
Report No. RLSZE001218880001

第 3 页 共 6 页
Page 3 of 6

测试项目 Test Item(s)	含量Content
多溴二苯醚(PBDEs) Polybrominated Diphenyl Ethers(PBDEs)	
一溴二苯醚 Monobromodiphenyl ether	N.D.
二溴二苯醚 Dibromodiphenyl ether	N.D.
三溴二苯醚 Tribromodiphenyl ether	N.D.
四溴二苯醚 Tetrabromodiphenyl ether	N.D.
五溴二苯醚 Pentabromodiphenyl ether	N.D.
六溴二苯醚 Hexabromodiphenyl ether	N.D.
七溴二苯醚 Heptabromodiphenyl ether	N.D.
八溴二苯醚 Octabromodiphenyl ether	N.D.
九溴二苯醚 Nonabromodiphenyl ether	N.D.
十溴二苯醚 Decabromodiphenyl ether	N.D.

注释 对于检测铅, 镉, 汞之样品已完全溶解。

-N.D. = 未检出 (小于方法检测限)

-mg/kg= ppm = 百万分之几

Note: **The sample had been dissolved totally tested for Lead, Cadmium, Mercury.**

-MDL = Method Detection Limit

-N.D. = Not Detected (<MDL)

-mg/kg = ppm = parts per million

检测报告 Test Report

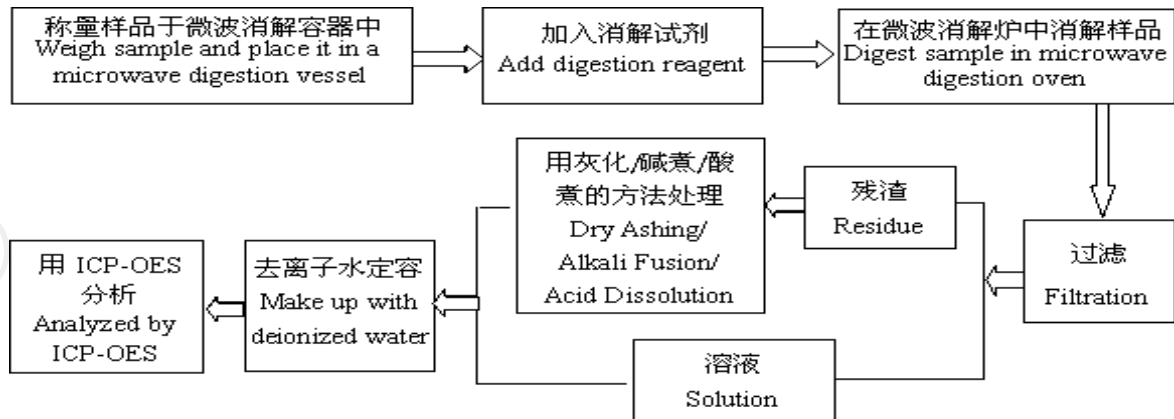
报告编号 RLSZE001218880001
Report No. RLSZE001218880001

第 4 页 共 6 页
Page 4 of 6

检测流程 Test Process

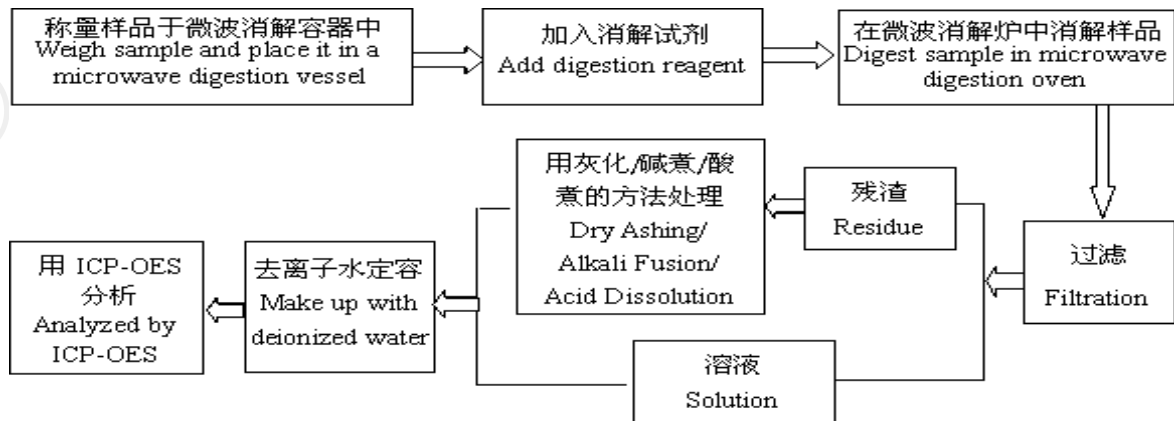
1. 铅(Pb), 镉(Cd)

Lead(Pb), Cadmium(Cd)



2. 汞(Hg)

Mercury(Hg)

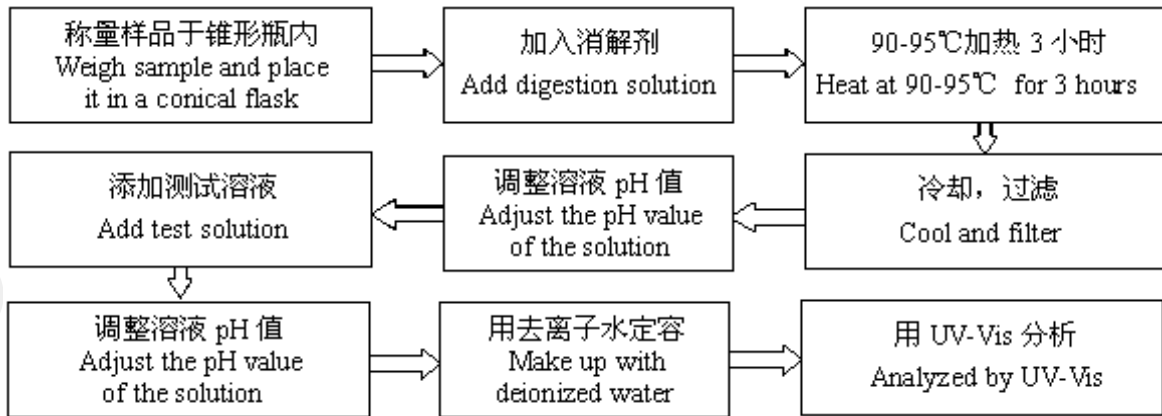


检测报告 Test Report

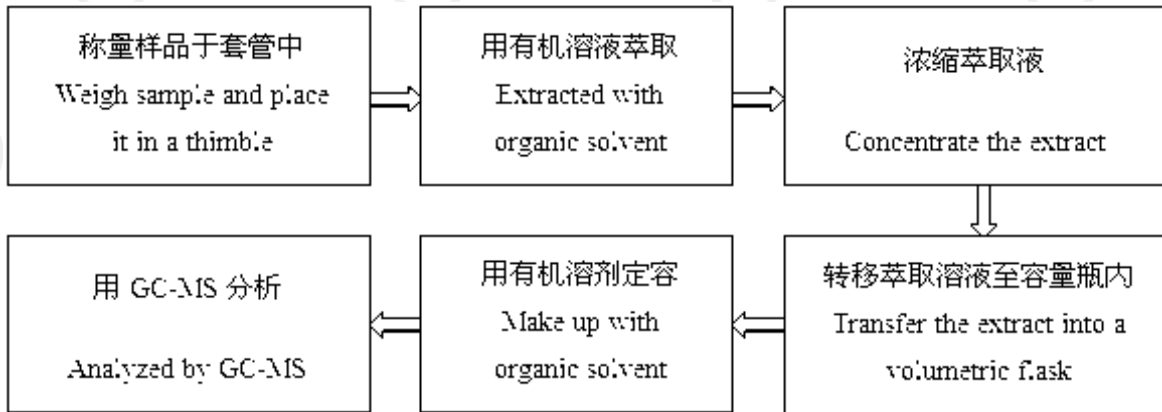
报告编号 RLSZE001218880001
Report No. RLSZE001218880001

第 5 页 共 6 页
Page 5 of 6

3. 六价铬(Cr(VI))
Hexavalent Chromium(Cr(VI))



4. 多溴联苯(PBBs), 多溴二苯醚(PBDEs)
Polybrominated Biphenyls(PBBs), Polybrominated Diphenyl Ethers(PBDEs)

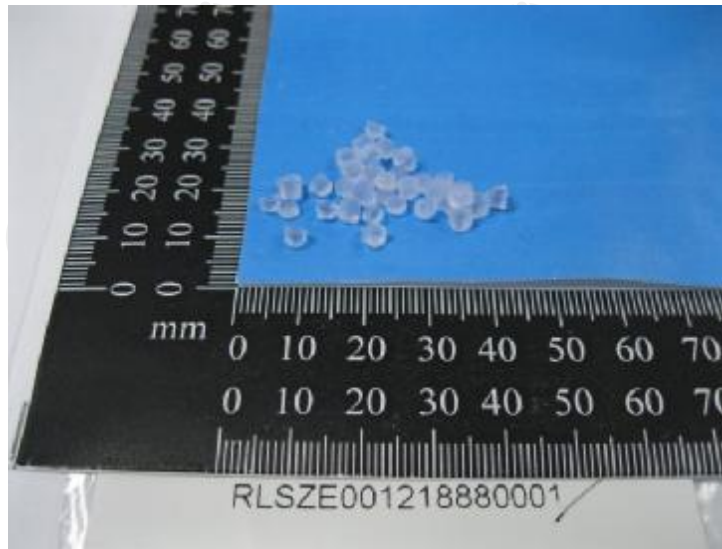


检测报告 Test Report

报告编号 RLSZE001218880001
Report No. RLSZE001218880001

第 6 页 共 6 页
Page 6 of 6

样品图片 Photo(s) of the sample(s)



*** 报告结束 ***

*** End of report ***

本报告无CTI盖章无效。本报告不得修改、增加或删除。此结果只对本次受测样品的结果负责。未经CTI书面同意，不得部分复制本报告，亦不可作为宣传品使用。

This report is considered invalidated without the Special Seal for Inspection of the CTI. This report shall not be altered, increased or deleted. The results shown in this test report refer only to the sample(s) tested. Without written approval of CTI, this test report shall not be copied except in full and published as advertisement.

深圳市宝安区70区鸿威工业园C栋
Building C, Hongwei Industrial Zone, Baoan 70 District, Shenzhen